



SYMON SMITH

RESIDENTIAL & COMMERCIAL ESTATE AGENTS
AND PROPERTY MANAGEMENT

240 Stamford Hill, London, N16 6TT

Sales: 020 8802 0025
sales@symonsmith.co.uk
Management: 020 8802 0022
management@symonsmith.co.uk



Flat 4 Median Road, Hackney, E5 0PF

£2,700

2 DOUBLE BEDROOM FLAT - PRIME LOCATION LOWER CLAPTON ROAD, E5 0PF

Situated on the Second Floor of the former Lord Cecil Public House period building set on the corner of Median Road, E5.

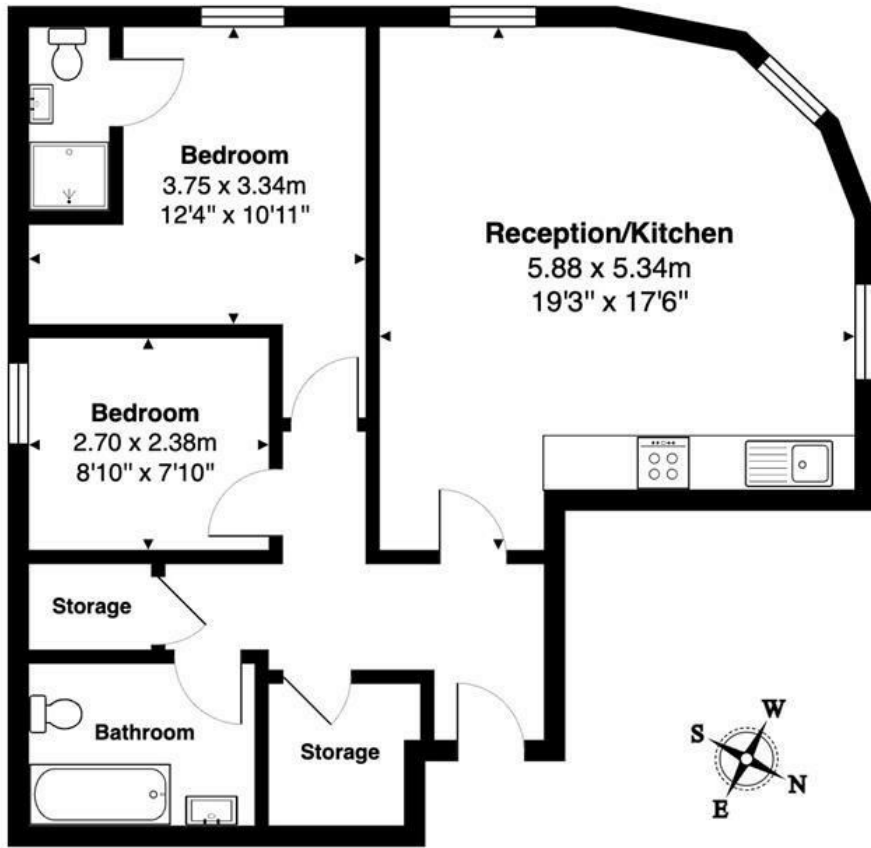
Moments from The Narrow Way 'of Mare Street and Hackney Central & Hackney Downs Stations. The property has been converted inside to offer beautiful accommodation consisting of: 2 bedrooms, Open plan Kitchen/lounge, bathroom/wc, En suite shower room off one of the bedrooms.

This charming period building boasts a spacious open plan reception room, seamlessly sharing space with excellent floor to ceiling height creating the perfect setting for entertaining or relaxing after a long day. The mixture of carpets and wooden laminate flooring throughout adds a touch of elegance and warmth to the space.

Offered Unfurnished - Available from Mid April 2026. - early viewing highly recommended!

- Second Floor - Period Property
- Bathroom/wc
- EPC Rating - C
- Two Bedrooms
- En - Suite Shower Room/Wc
- Council Tax Band - C
- Open Plan Kitchen Lounge
- Excellent Transport Links

Lord Cecil House, Median Road Hackney, E5 0PF



First Floor

Total Area: 67.2 m² ... 723 ft²

All measurements are approximate and for display purposes only.



WWW.SYMONSMITH.CO.UK